



OGDEN MUSEUM
OF SOUTHERN ART

O-riginal Art Activities: River Paths Watercolor Inspired by Kael Alford



Kael Alford, *Flooding on Island Road, Looking Toward Isle de Jean Charles*, 2008, Archival pigment print

Kael Alford's *Bottom of Da Boot* documents the South Louisiana communities most affected by land loss due to the oil industry and climate change. The more than 1,500 residents of Point-aux-Chenes and Isle de Jean Charles are a mix of native tribes, French and American settlers. Alford's ancestry can be traced to the native tribes of the region through her maternal grandmother. Her work compassionately tells the story of the people and environments of South Louisiana - the front line of America's struggle with coastal land loss and climate change.

Learn about the history of the Mississippi River while creating an abstract watercolor.

Supplies List:

Template, Washable Markers, Black Sharpie, Paintbrush, Cup for water, Napkins

Instructions

Step 1: Study the image of the river paths throughout history. Notice how the river path changes over time.

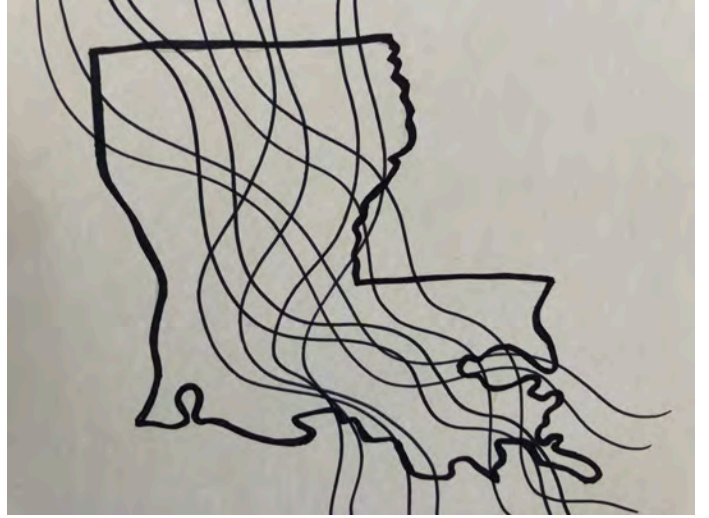
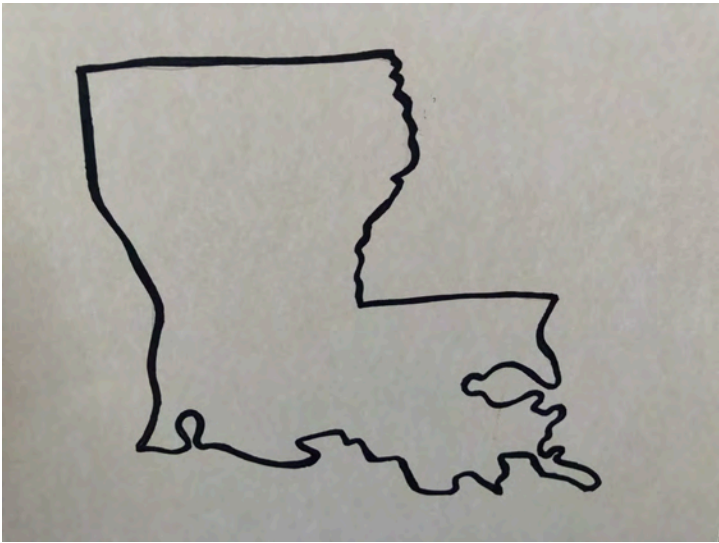
Step 2: Where would the river turn if there were no levees? Use a permanent marker to draw river paths on the template of Louisiana.

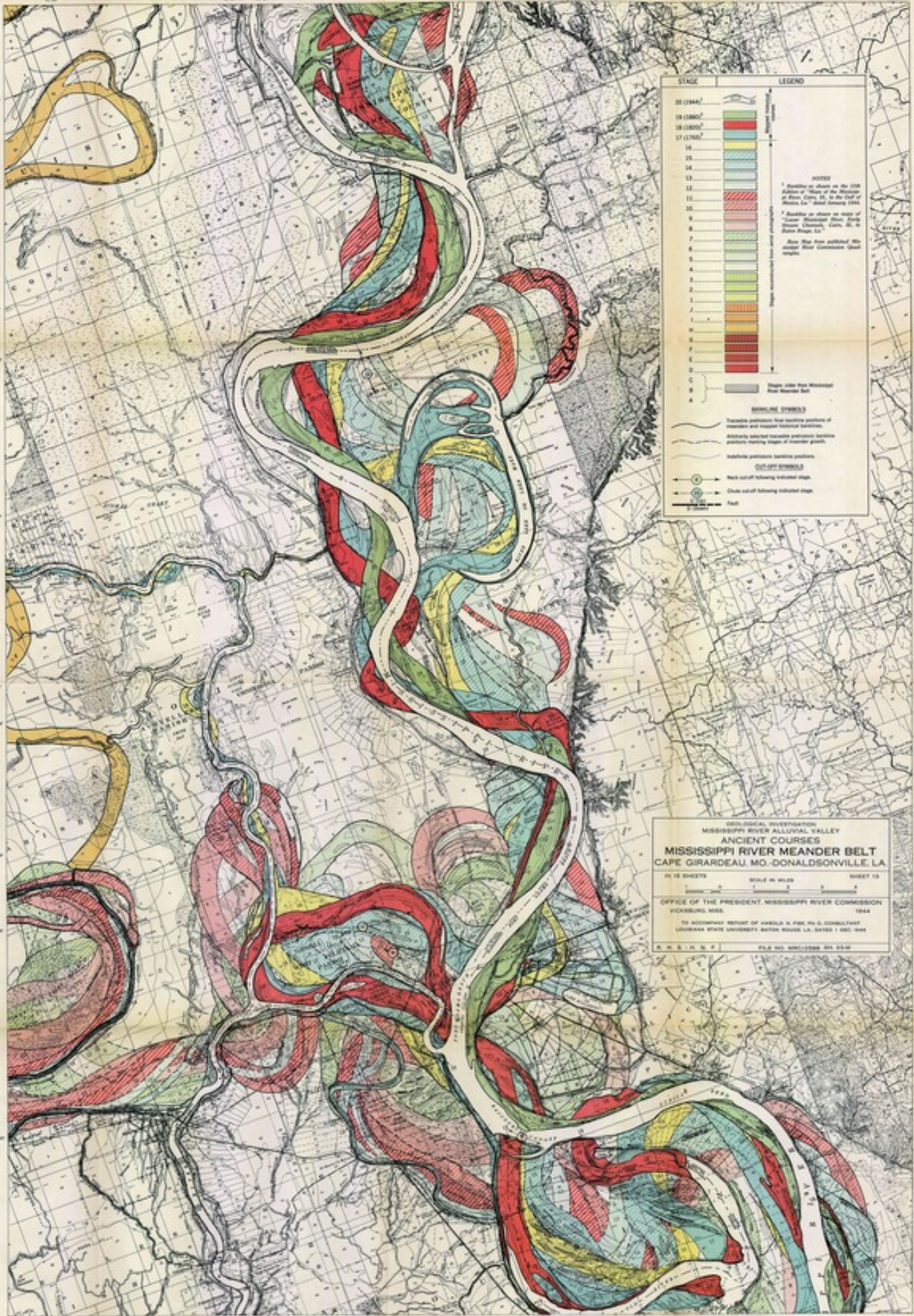
Step 3: Use washable makers to color the river paths. You don't have to color in all of the white space perfectly. In the next step we will use water to fill in the rest of the space. Next, color in the Louisiana state shape and background if you want.

Step 4: Use water and a paintbrush to "paint" over the river paths and see how the marker bleeds with the water making a watercolor painting. Be sure to lightly dip the brush in the water then wipe the brush off on the edge of the cup to lessen the amount of water you use. Remember to clean the brush in the water when changing to another color.

SEE KAEAL ALFORD'S *FLOODING ON ISLAND ROAD, LOOKING TOWARD ISLE DE JEAN CHARLES* IN *REVELATIONS: RECENT PHOTOGRAPHY ACQUISITIONS* AT THE OGDEN MUSEUM. CHECK OUT [OGDEN MUSEUM ONLINE](#) FOR MORE RESOURCES!

QUESTIONS? EMAIL
EDUCATION@OGDENMUSEUM.ORG





| STAGE | LEGEND |
|-----------|----------|
| 20 (1944) | [Symbol] |
| 19 (1880) | [Symbol] |
| 18 (1820) | [Symbol] |
| 17 (1760) | [Symbol] |
| 16 | [Symbol] |
| 15 | [Symbol] |
| 14 | [Symbol] |
| 13 | [Symbol] |
| 12 | [Symbol] |
| 11 | [Symbol] |
| 10 | [Symbol] |
| 9 | [Symbol] |
| 8 | [Symbol] |
| 7 | [Symbol] |
| 6 | [Symbol] |
| 5 | [Symbol] |
| 4 | [Symbol] |
| 3 | [Symbol] |
| 2 | [Symbol] |
| 1 | [Symbol] |
| 0 | [Symbol] |
| A | [Symbol] |

NOTES

¹ Available in detail on the 1:50,000 Edition of "Map of the State of Louisiana, from the Survey of 1843-1844" by the U.S. Army, 1844.

² Available on sheet on map of "The Mississippi River Commission, 1879-1904" by the U.S. Army, 1904.

See also the "Map of the Mississippi River Commission, 1879-1904".

MEANDER SYMBOLS

Double arrows that indicate position of meanders and mapped historical features.

Arrows that indicate position of meanders and mapped historical features.

Single arrows that indicate position of meanders and mapped historical features.

CUT-OFF SYMBOLS

Black cut-off following indicated stage.

Thin cut-off following indicated stage.

Foot

GEOLOGICAL INVESTIGATION
MISSISSIPPI RIVER ALLUVIAL VALLEY
ANCIENT COURSES
MISSISSIPPI RIVER MEANDER BELT
CAPE GIRARDEAU, MO.-DONALDSONVILLE, LA.

IN 15 SHEETS SHEET 13

SCALE IN MILES

OFFICE OF THE PRESIDENT, MISSISSIPPI RIVER COMMISSION
VICKSBURG, MISS. 1944

IN ACCORDANCE WITH REPORT OF HAROLD H. FOX, PH.D., CONSULTANT
LOUISIANA STATE UNIVERSITY, BAYOU BOULE, LA. DATED 1 SEP. 1944

A. H. S. H. P. FILE NO. 4887-1588 391 3347

