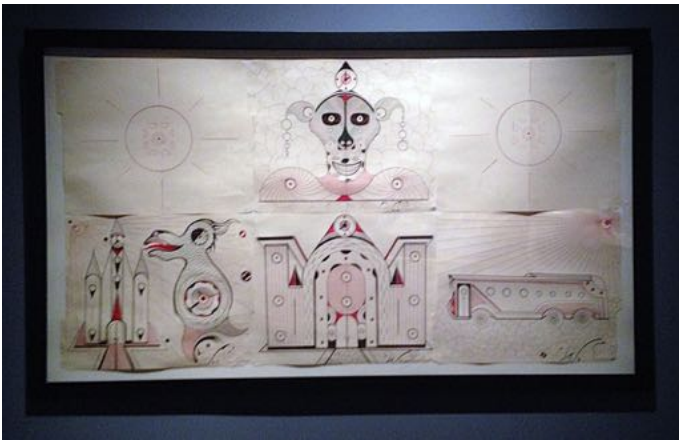


Ogden After Hours
O-riginal Art Activity:
Creature Drawings Inspired
by Welmon Sharlhorne



Welmon Sharlhorne, *Untitled*, bic pen on six manila folders, 2003, Collection of the artist
Located on the 3rd floor

Welmon Sharlhorne created his work while incarcerated at Angola Prison. When Welmon was working as a groundskeeper he had a disagreement with a customer. The customer called the police, which led to his arrest. While in prison he asked for pen and paper to write his lawyer (even though he represented himself). Sharlhorne was given ballpoint pens and manila folders, which he used to create art. Art and imagination played a big part in his work, “When you are doing time, you have the time to realize how art can keep you free.” - Sharlhorne

Supplies List:

Manila folders, Rulers, Cups, Red and Black ballpoint pens, Red and Black thin sharpies

Instructions:

Step 1: Think about an imaginary creature that you want to create.

Step 2: Think about the shape and texture of your monster. Is it round or tall, fuzzy or rough? Open the folder. Use pens or sharpies to draw your creature on one side of the folder.

Step 3: If your creature could live anywhere, where would it live? Draw your monster’s home on the other side of the folder.

Step 4: If your creature wrote a letter to someone in prison what would it say? Use a pen to write a letter on the inside of the folder.

